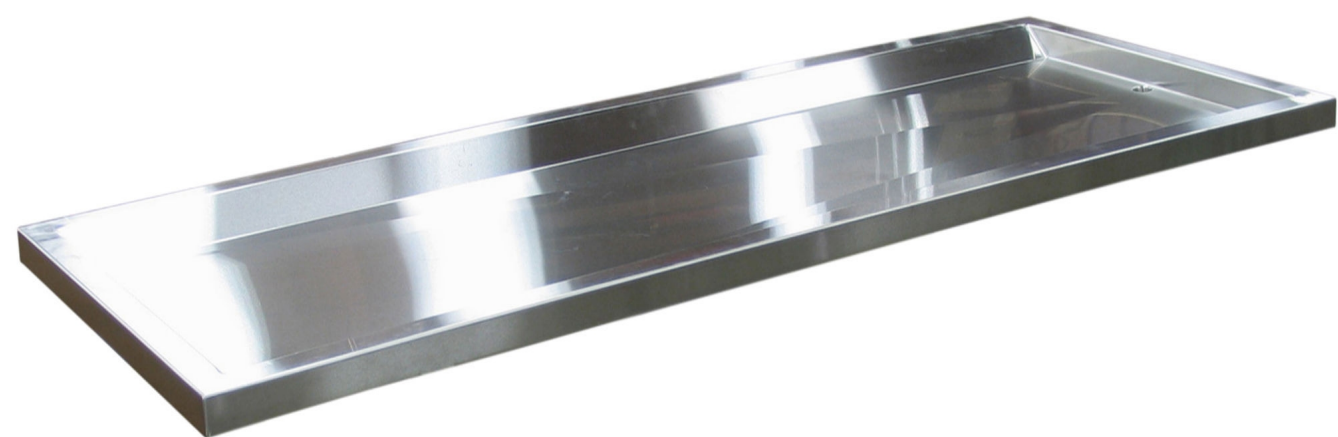


Stainless Steel Autopsy Tray



Rating: Not Rated Yet

Price:

Variant price modifier:

Base price with tax:

Price with discount:

Salesprice with discount:

Sales price:

Sales price without tax:

Discount:

Tax amount:

[Ask a question about this product](#)

Manufacturer:

Description

- Fabricated from 14 gauge 304 stainless steel with No. 4 finish.
- Detachable top ensures a secure fit with no mechanical fastening devices required.

Reviews

There are yet no reviews for this product.